



Ecopest Inc.

Complete Pest Control and Tree Spraying Services

6792 - 99 Street Edmonton, AB T6E 5B8

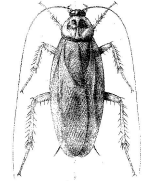
Phone: 780-448-2661 Grande Prairie Phone: 780-539-1877 Toll Free: 1(866) 269-2847

Email: service@ecopest.ca Website: www.ecopest.ca

We have been contracted by the Management of this building to provide a pesticide application to your suite for the elimination of **Cockroaches – Spray application**.

We require access to your suite between the hours of **8 AM and 5 PM**.

As a precaution during the application of the pesticide, we require that you vacate your suite for **4 hours** from the time of application.



NOTE: If you are unable to accommodate this appointment, please contact your resident manager immediately. Ecopest is not responsible for any stains or damage that may occur.

For our service technicians to treat most effectively, we ask your co-operation in carrying out the following instructions:

1. In **all rooms**: Move all furniture at least **2 feet** away from the walls and heat registers and radiators so spray can be applied to baseboard perimeters. Heavy wall units may remain and we will work around them. These items do not require covering over unless they contain dishes or food. Fridge and stove should be moved 2 feet from walls as well.
2. Remove all items from all kitchen cupboards, pantry, drawers, counter tops, stove and fridge tops and place them on the kitchen table and cover with plastic film, blankets or sheets.
3. Linen, Broom and Clothing storage closet **floor** areas must be cleared of all items. These items can be placed on the beds.
4. Birds and pets must be removed from the premises, and fish tanks (if any) **must** be covered and the motors turned off, to prevent any possibility of poisoning.
5. Children's toys should be placed in plastic bags or covered toy boxes.
6. Ensure that the unit is clean, and that food items are sealed in containers so that cockroaches can not access. Keep garbage and food residue to a minimum.
7. Unplug all cords from outlets, and cover TV's, computers, and other electronic items to prevent any spray from getting on them.

NOTE: Upon re-entry to your premises **do not wash any of the baseboards or cupboards for a period of at least six weeks. The pesticide has residual effects lessened by washing.** Cupboard shelves and drawers should **NOT** be washed before returning any items but must have non-adhesive paper on them before returning any items. Kitchen counter tops, cutting boards, fridge and stove tops should be washed prior to any items being returned to them. Vacuum after treatment, especially along the baseboards, use crevice tool to get into corners and cracks. Regular vacuuming should be done because cleanliness and sanitation is a vital part of eradication and successful treatment.

Where pregnancies, allergies, illnesses or other unusual circumstances occur, occupants may wish to remain out of the premises for periods **longer** than those indicated above.

Tempo – PCP#25673

Prelude – PCP#26509

THANK YOU FOR YOUR CO-OPERATION

Caring for you and your environment